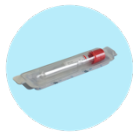




## INSTRUCTIONS PCR COVID-19 SWAB HOME TEST KIT

**PLEASE READ ALL INSTRUCTIONS BEFORE COLLECTING YOUR SAMPLE**

### YOUR KIT CONTAINS



Sample tube with liquid



Swab



Return bag

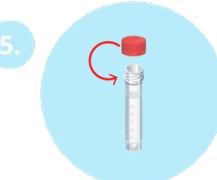
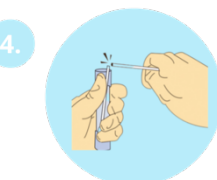
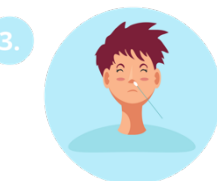
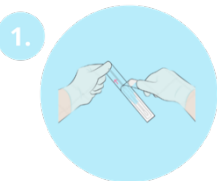
Please make sure each kit contains the above mentioned.  
\*If you order 2/3/4 tests, you will have 2/3/4 of the above.

### BEFORE TAKING YOUR SAMPLE

ORDER NO.	DAY	CUSTOMER STAGE CD	REC	LAB STAGE PROC	RES SENT	RESULT
88300	<input type="button" value="Save"/> Day 2 PCR	<input type="checkbox"/> Enter Royal Mail Tracking Number <input type="button" value="Royal Mail"/>	<input type="checkbox"/>	<input type="checkbox"/>	<input type="checkbox"/>	

Login to your account on [www.medicinesonline.org.uk](http://www.medicinesonline.org.uk) and activate your sample by clicking on **SAMPLE ACTIVATION AND RESULT**, then select your test day, enter **Royal Mail Tracking Number** and **tube number** then click on save.

### TAKING YOUR TEST





## INSTRUCTIONS PCR COVID-19 SWAB HOME TEST KIT

6.



Place the sample tube back into the plastic case, checking once again before doing so that the screw cap is firmly closed, and seal tightly. Put your sample in the return bag provided, affix the sticker on the bag and seal securely

7.



Please **write down your tracking number** from the label which you can find on the return bag and keep it for the record so, you can be able to track it down and check when your sample will arrive at the lab. Post the bag in a Royal Mail Priority Post Box. To find the nearest Priority Post Box please download the Royal Mail app or go to [www.royalmail.com/services-near-you/](http://www.royalmail.com/services-near-you/)

### RESULTS

**2&8** – 1-3 days of your sample being received by the laboratory. **Day 5** - 24 hours of your sample being received by the laboratory. **Fit to Fly** - Same day of your sample being received by the laboratory. You will receive your results on your email address.

### HOW TO TEST A CHILD



In accordance with government guidance, testing on children aged 11 and under must be administered by an adult. Persons aged 12-17 should self-test with adult supervision. You may find the following government video\* useful on how to test a child:

[youtu.be/Xaw8DsF2lgc](https://youtu.be/Xaw8DsF2lgc)

Please note that this video may contain a test kit that is different to your test kit, so please follow the instructions provided with your test kit. Once you have taken your child's sample, go to step 4 overleaf and follow the instructions on how to place the swab in the sample tube and return your sample to the laboratory.

#### Intended Use

The SARS-CoV-2 Test Kit (Real-Time) PCR is an *in vitro* diagnostic real-time reverse transcription-PCR assay. Intended for the qualitative detection of nucleic acid from SARS-CoV-2 in nasopharyngeal/oropharyngeal Swabs, anterior/mid-turbinate nasal swabs, nasopharyngeal washes/aspirated or nasal aspirates, and bronchoalveolar lavage (BAL) specimens from individuals suspected of COVID-19 by their healthcare provider.

#### Safety Precautions

Only use the equipment provided to take your sample.  
Kit to be used for intended use only.  
Keep out of reach of children.

#### Warnings

*In vitro* diagnostic use only.  
Do not use the test kit past its expiration date.  
Swabs, tubes, and test devices are for single use only.  
Do not interchange or mix components from other kits.  
Testing should only be performed using the swabs provided within the kit.  
Specimens must be processed as indicated in the Test Procedure section of this Product Insert. Failure to follow the instructions for use can result in inaccurate results.  
Inadequate or inappropriate specimen collection and storage can affect results.

#### Storage

The kit should be stored at 2-8°C away from light.  
The kit is temporarily valid for 12 months.  
It is recommended to transport between -18°C to 37°C.  
Do not use reagents past their expiration date.

#### Index of symbols

	Consult instruction for use
	Use by
	For <i>in vitro</i> diagnostic use only
	Manufacturer
	Authorized Representative
	Do not reuse
	Catalog#
	Lot Number
	Keep out of sunlight
	Store between 2-8°C
	Keep dry
	Damaged package
	Caution
	Sterile R
	Biohazard



Shen Zhen Topoet Biomedical Technology Co., LTD  
7F Bld B, Haikexing Industrial Park, Jinlong Avenue, Pingshan District, Shenzhen City, P.R. China



Shenzhen EBO Testing Center  
3/F, Building A, Qinye Business Center, Xin'an Sixth Road, 82th District, Bao'an, Shenzhen, China

#### Swab information



Dalian Ronghang Medical Healthy Devices Co., Ltd  
Maoyingzi Hamlet, Dalianwan Town, Ganjingzi District, Dalian, 116113



Lotus NL B.V.  
Koningin Julianaplein 10, le Verd, 2595AA, The Hague, Netherlands.

CE 0197